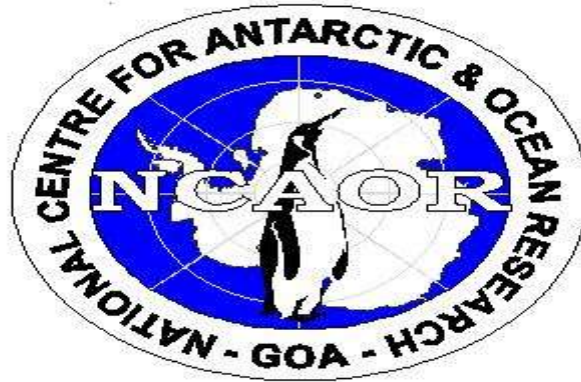


TENDER DOCUMENT FOR



DESIGN, SUPPLY & INSTALLATION OF A FIELD STATION

NATIONAL CENTRE FOR ANTARCTIC & OCEAN RESEARCH

(Ministry of Earth Sciences, Govt. Of India)

Headland Sada, Vasco-da-Gama

GOA -403 804, INDIA

Tel: 91- (0) 832 2525571 TeleFax: 91- (0) 832 2525573

Email: warlu62@ncaor.gov.in

Website: www.ncaor.gov.in

NATIONAL CENTRE FOR ANTARCTIC & OCEAN RESEARCH
(Ministry of Earth Sciences, Govt. Of India),
HEADLAND SADA, VASCO-DA-GAMA, GOA - 403 804

TENDER NO. NCAOR/LAB-2264/PT-55.
TENDER FOR DESIGN, SUPPLY & INSTALLATION OF A FIELD STATION.

| | | |
|----|-----------------------------------------------------------------------------------------------|---------------------------------------------------------------------------------------------------------------------------------------------------------------------------------------------------------------------------------------------------------------------------------------------------------------------------------------------------------------------------------------------------------------------------------------------------------------------------------------------------------------------------------------------------------------------------------------------------------------------------|
| 1. | DESIGN, SUPPLY & INSTALLATION OF A FIELD STATION Quantity-Specification- | 01 As per Annexure I |
| 2. | General Terms and Conditions | As per Annexure II |
| 3. | Cost of Tender Documents (In Person) | ` 2000.00 |
| 4. | Cost of Tender Documents (By Post) | ` 2050.00 |
| 5. | EMD | <p>Tender documents can be downloaded by tenderers from NCAOR website. In case a tenderer is using the documents and forms downloaded from the website, the cost of tender documents shall be sent in the form of Bank Draft in a separate envelope along with the tender.</p> <p>Bidders shall submit EMD along with their tender, either by DD drawn in favor of NCAOR, for a sum of ` 1,00,000.00 (Rupees One Lakh only) payable at Vasco-da-Gama only.</p> <p style="text-align: center;">Or</p> <p>In the form of a bank guarantee for a sum of ` 1,00,000.00 (Rupees One Lakh only)</p> |
| 6. | Last Date and time for issue of tender documents | MONDAY 30.03.2015 1600 Hrs (IST) |
| 7. | Last Date and time for submission of sealed quotations | TUESDAY 31.03.2015 1700Hrs (IST) |
| 8. | Date and time of tender opening | WEDNESDAY 01.04.2015 1000Hrs (IST) |

Specification for Design, supply and installation of a field station in Chandra basin, Lahaul – Spiti Valley, Himachal Pradesh.

National Center for Antarctic and Ocean Research (NCAOR), Ministry of Earth Sciences, Govt. of India propose to setup dedicated field station in Chandra basin, near Batal (~125km from Manali by road), Himachal Pradesh for undertaking its long-term glaciological project. The base station (~4000m altitude) should be an all-weather station suitable for the stay and work by field personnel throughout the year in all seasons.

1. Design conditions:

The site being in higher Himalaya are subjected to extreme weather conditions , the structure and fabrication should be able to sustain in following weather condition:

Temp: minimum of -25°C in winter and maximum of 30°C in summer

Snowfall: Maximum of 3m (10ft approx) accumulation during winter (from October to March)

Rainfall: Maximum during monsoon (average 255mm)

Wind: Maximum of 41m/s

2. Approaches:

Up to Manali, Himachal Pradesh) – By road

Manali - Batal (Manali-Kaza route) - By road (120 km approx.)

Batal - Sutari Dhaka base (site of establishment) - By foot (6-7 km approx.)

Considering the terrain conditions, support for transportation of the material beyond Manali to the site could be provided by NCAOR. However, the responsibility of materials during transportation as well as the installation will be supplier only.

3. Technical specifications:

The field station complex would involve three units: A) i. Residential units with kitchen, ii. Residential units with washroom and storage space, B). Field laboratory unit C). Washroom and Toilet units

Detailed planned dimensions and sketch of three units have been given below:

- A. 21x12x8 ft– 2 huts (4 bunker type beds in each hut; fig 1a and 1b); one hut should have an attached kitchen (6x12x8 ft) unit. However, the second hut should have an attached washroom and storage (6x12x8ft) unit in place of kitchen area.

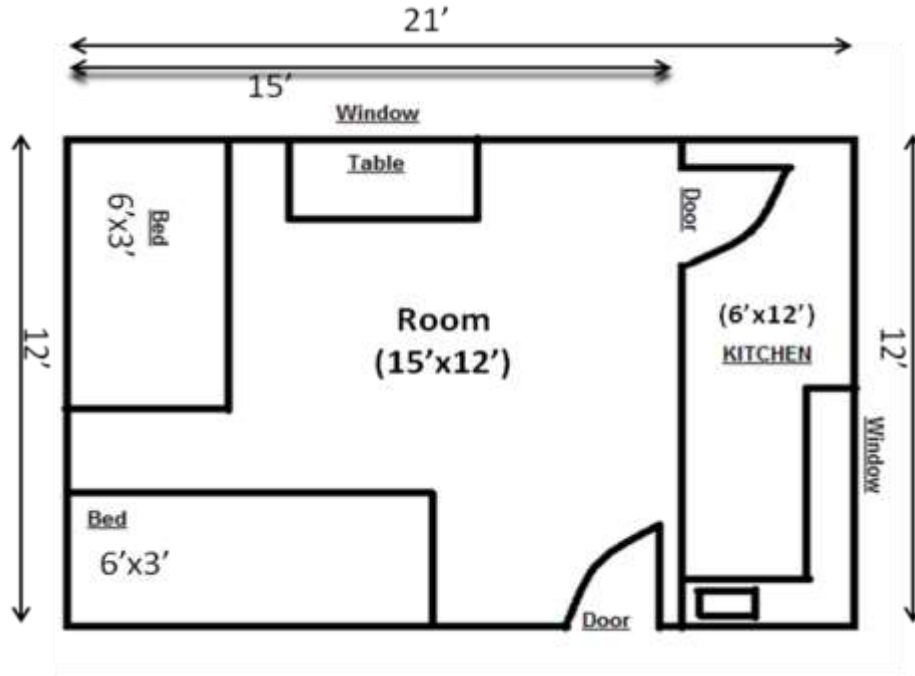


Figure 1.a Residential unit with kitchen

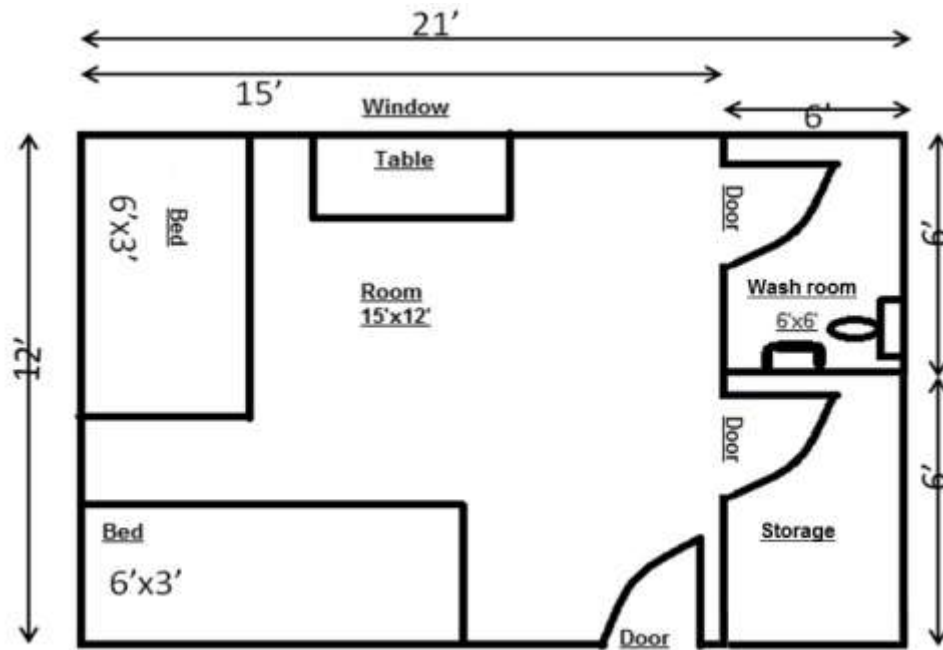


Figure 1.b Residential unit with washroom & storage

B. Field laboratory Unit (20x15x8 ft) - 1 hut

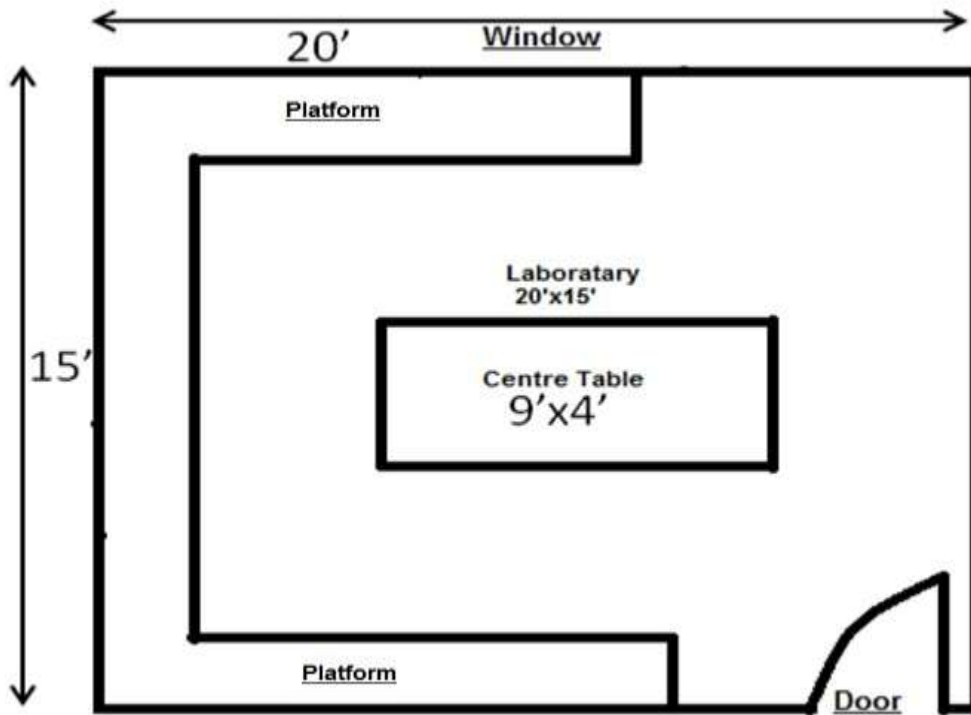


Figure 2. Laboratory unit

C. Washroom and toilet Units: Two such units (6x6x8 ft) set up at ~20 m away from the main units.

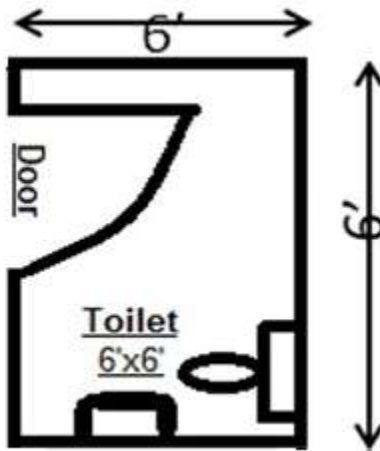


Figure 3. Washroom and toilet Unit

The hut/cabin should be of modular nature and the individual panels should be light enough to be carried by one porter to remote areas in a short time, ensuring immediate re-use at a new site with minimum delay.

Detailed specifications:

- a. Roof/Wall/Floor: Not less than 150 mm thick PUF panels and the panel should join together with CAM LOCK (Roof should be of slanting type) and have 0.6 mm extra thick Hi-Rib insulated panel to hold minimum of 10ft snow load during winter; Floor frame made of a minimum of 100 mm ISMB Sections and structure should grouted into base concrete with 150 mm HILTI Chemical Bolts. On top of frame structure of floor, 150 mm thick PUF panel and ~12.5 mm wooden flooring should be provided.
- b. Internal/External Cladding: 0.6 mm or more cladding made of PPGI Sheet
- c. Frame should be standard (minimum ISMC 75 quality or better) with 1.5 mm or more GI section
- d. All doors of each unit should have dimension of 2000 X 600 mm with locking arrangement. Door should make of 150 mm thick PUF panel with cold room standard fittings including neoprene door gasket with a view mirror with glass thickness 25 mm.
- e. One insulated polycarbonate / UPVC sliding window (double layer) and one unbreakable double layer glass (15mm glass thickness for both side) sliding window of dimension 900mmx1200mm in each residential and laboratory units. Kitchen should have only one unbreakable double glass sliding window (900mmx1200mm) with same specification given above. However each unit of washroom, store and toilet should have one insulated polycarbonate UPVC sliding window of size 500mmx400mm with same specification given above.
- f. Extra insulation of polystyrene thickness 25 mm (minimum density of 18 Kg/m³) from the inside of cabin with a wall cladding of wooden panels 12.5 mm thick all around.
- g. Roof False Ceiling: using 8-10mm of grid false ceiling of Gyprock tiles with an extra insulation layer of 25 mm polystyrene on top of it. 10 number of 5 watt LED ceiling Lights in each unit for proper illumination
- h. All joints should be sealed by Silicon sealant
- i. Windows cover with locking arrangement.

Residential huts/cabins

- a. Bunk Bed (2 layer) for occupancy of 4 people Size 6' X 3' in each residential units (detailed specifications at table 1.)
- b. Two working table (folding table attached with wall) of Size 3' X 2.5' made of standard teak wood
- c. A fixed standing wardrobe made of teak wood/ marine ply with dimension of 6'x4'x1.5' in each residential unit. For details see figure 4, covered drawers should be provided, with necessary holders and locks.
- d. Electric Fitments: LED Lights and five 5 Amp. Socket in each residential unit.

Table 1. Bed specifications

| | |
|--------------------|-------------------------------------------------------------------------------------|
| Bunk Bed Quantity | 4 |
| Dimension | 6'Lx3'Wx6'H |
| Wood Specification | Bed frames should be made of highest grade of teak wood |
| Size | 6'Lx3W |
| Leg | 2x6 legs |
| Rung | 2X4 rungs |
| Safety Rails | 8" thick safety rails in upper bed and go 10" and 15" above the top of the mattress |
| Bed Slats | Two bed slats |
| Capacity | 500kg |
| Ladder | Angled end ladder |
| Storage | Lower bed of each unit should have storage |

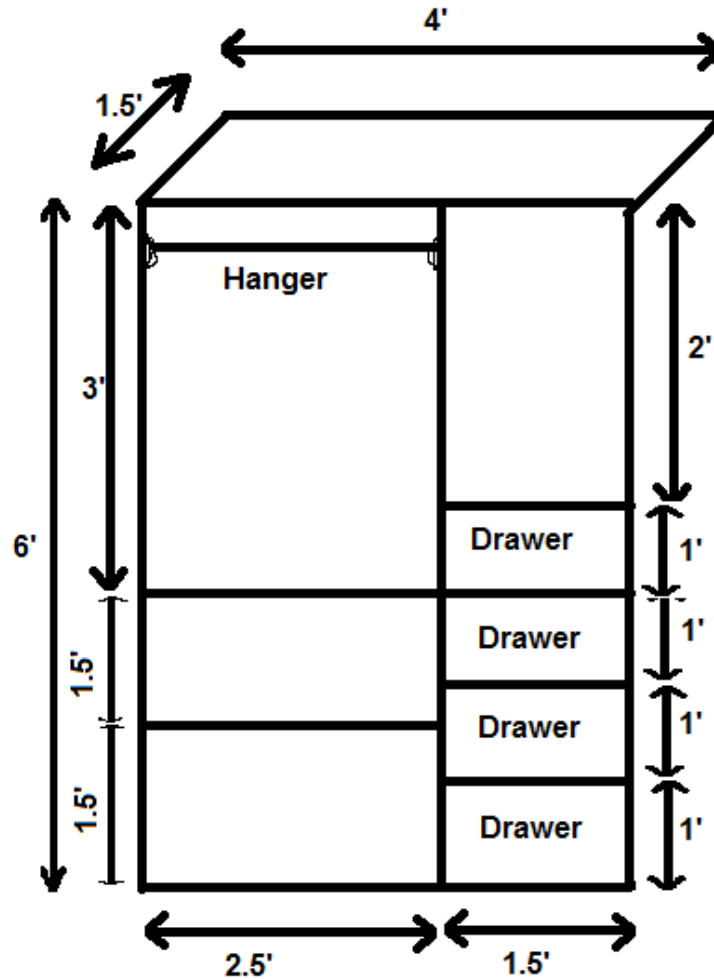


Figure 4. Wardrobe

Kitchen:

- a. Platform: L shape (fire proof material) with dimension of 6'x2' in one side and 3'x2' in adjacent side. Height should be 3'. At least three racks all along with covered in each side should be provided under the platform.
- b. One SS Sink size 2'x1.5' with complete connections with tap
- c. Electric Fittings: LED lights and 2, five Amp. Socket
- d. Exhaust fan facility with shutter covers should be provided for the kitchen

Washroom

- a. Western Toilet (standard size) -1 with all fittings
- b. Wash basin size of 1.5'x 1' – 1 with all fittings
- c. Tap -3 with all fittings (one for toilet, one for basin and one for bath)
- d. Mirror with fittings: 2.5'x2' - 2
- e. Electric Fittings: LED lights and 2, five Amp. Socket

Laboratory huts/cabins

- a. Central table for laboratory (9'x4' one table or 4.5'x 4' two tables) made of standard teak wood. Height of table should be adjustable between 2.5'-3.5'.
- b. Instrumentation platform all along three sides (10'x2' one side, 15'x2' second side and 10'x2' third side with height of 3' as shown in figure 2).
- c. At least three racks (drawers) with four partitions all along in each side including covered drawer should be provided under the platform, with necessary holders and locks.
- d. Two SS wash basins (SS Sink size 2'x1.5')with complete tap connections
- e. Electric Fittings: LED Lights and 5, five Amps. Socket
- f. Exhaust fan facility with shutter covers

Wash room and Toilets

- a. One Indian type and one Western type Toilets with all fittings (one in each toilet)
- b. Wash basin size of 1.5'x 1' – 2 with all fittings(one in each toilet)
- c. Tap -2 with all fittings (one in each toilet)
- d. Mirror: 2.5'x2' - 2
- e. Electric Fittings: LED lights and 2, five Amp. Socket
- f. Exhaust fan facility with shutter covers should be provided.

Note: Separate water tank with all fittings for each unit should have provided.

All electrical wire/fittings, bathroom/toilet fittings, false ceiling, glass and water tanks should be of reputed international brands/make.

Technical Compliance Statement for Design, supply and installation of a field station in Chandra basin, Lahaul –Spiti Valley, Himachal Pradesh.

| SR. NO. | Technical Compliance Statement for Design, supply and installation of a field station | COMPLIED/ NOT COMPLIED | EXTRA FEATURES |
|---------|------------------------------------------------------------------------------------------------------------------------------------------------------------------------------------------------------------------------------------------------------------------------------------------------------------------------------------------------------------------------------------------------------------------------------------------------------------------------------------------|------------------------------|-------------------|
| 1 | <p>Design conditions: The site being in higher Himalaya are subjected to extreme weather conditions , the structure and fabrication should be able to sustain in following weather condition: Temp: minimum of -25°C in winter and maximum of 30°C in summer Snowfall: Maximum of 3m (10ft approx) accumulation during winter (from October to March) Rainfall: Maximum during monsoon (average 255mm) Wind: Maximum of 41m/s</p> | | |
| 2 | <p>Approaches: Up to Manali, Himachal Pradesh) – By road Manali - Batal (Manali-Kaza route) - By road (120 km approx.) Batal - Sutari Dhaka base (site of establishment) - By foot (6-7 km approx.) Considering the terrain conditions, support for transportation of the material beyond Manali to the site could be provided by NCAOR. However, the responsibility of materials during transportation as well as the installation will be supplier only.</p> | | |
| 3 | <p>Technical specifications: The field station complex would involve three units: A) i. Residential units with kitchen, ii. Residential units with washroom and storage space, B). Field laboratory unit C). Washroom and Toilet units</p> | | |
| | <p>Detailed planned dimensions and sketch of three units have been given below: A. 21x12x8 ft– 2 huts (4 bunker type beds in each hut; fig 1a and 1b); one hut should have an attached kitchen (6x12x8 ft) unit. However, the second hut should have an attached washroom and storage (6x12x8ft) unit in place of kitchen area.</p> | | |

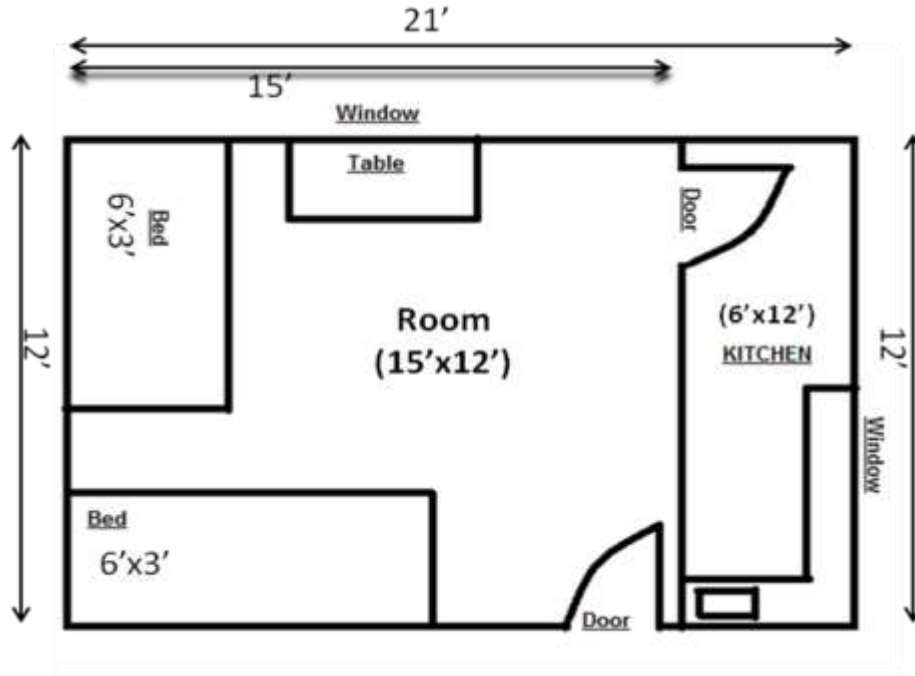


Figure 1.a Residential unit with kitchen

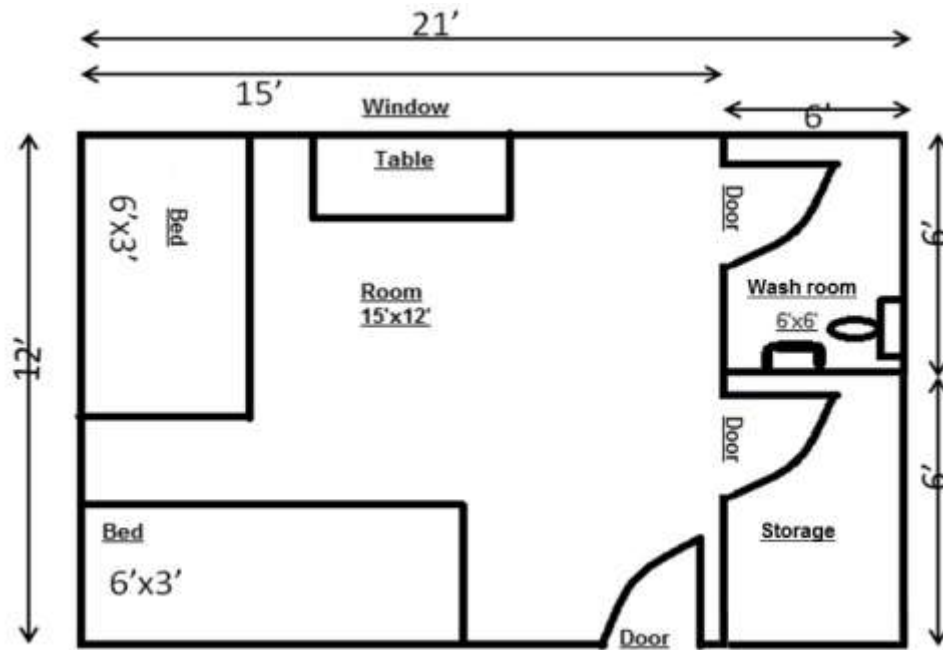


Figure 1.b Residential unit with washroom & storage

A. Field laboratory Unit (20x15x8 ft) - 1 hut

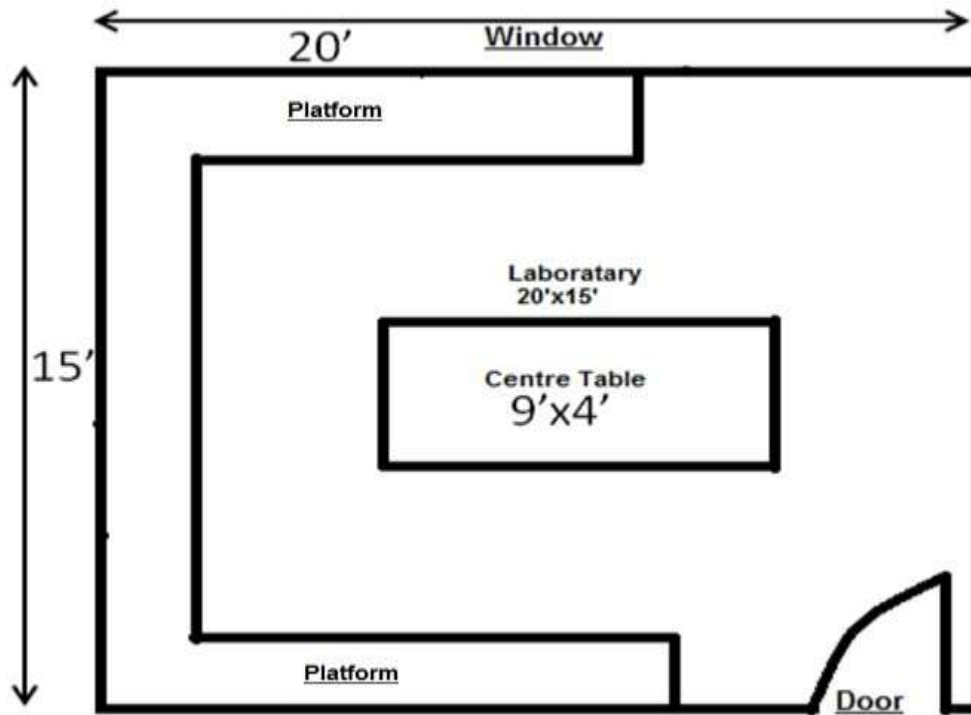


Figure 2. Laboratory unit

B. Washroom and toilet Units: Two such units (6x6x8 ft) set up at ~20 m away from the main units.

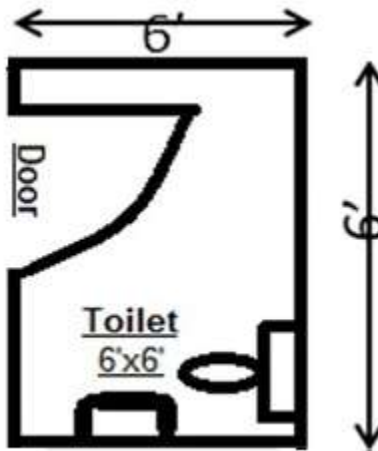


Figure 3. Washroom and toilet Unit

| | | | |
|-----|-------------------------------------------------------------------------------------------------------------------------------------------------------------------------------------------------------------------------------------------------------------------------------------------------------------------------------------------------------------------------------------------------------------------------------------------------------------------------------------------------------------------------------|--|--|
| | The hut/cabin should be of modular nature and the individual panels should be light enough to be carried by one porter to remote areas in a short time, ensuring immediate re-use at a new site with minimum delay. | | |
| a. | Detailed specifications: Roof/Wall/Floor: Not less than 150 mm thick PUF panels and the panel should join together with CAM LOCK (Roof should be of slanting type) and have 0.6 mm extra thick Hi-Rib insulated panel to hold minimum of 10ft snow load during winter; Floor frame made of a minimum of 100 mm ISMB Sections and structure should grouted into base concrete with 150 mm HILTI Chemical Bolts. On top of frame structure of floor, 150 mm thick PUF panel and ~12.5 mm wooden flooring should be provided. | | |
| b. | Internal/External Cladding: 0.6 mm or more cladding made of PPGI Sheet | | |
| c. | Frame should be standard (minimum ISMC 75 quality or better) with 1.5 mm or more GI section | | |
| d. | All doors of each unit should have dimension of 2000 X 600 mm with locking arrangement. Door should make of 150 mm thick PUF panel with cold room standard fittings including neoprene door gasket with a view mirror with glass thickness 25 mm. | | |
| e. | One insulated polycarbonate / UPVC sliding window (double layer) and one unbreakable double layer glass (15mm glass thickness for both side) sliding window of dimension 900mmx1200mm in each residential and laboratory units. Kitchen should have only one unbreakable double glass sliding window (900mmx1200mm) with same specification given above. However each unit of washroom, store and toilet should have one insulated polycarbonate UPVC sliding window of size 500mmx400mm with same specification given above. | | |
| f. | Extra insulation of polystyrene thickness 25 mm (minimum density of 18 Kg/m ³) from the inside of cabin with a wall cladding of wooden panels 12.5 mm thick all around. | | |
| g. | Roof False Ceiling: using 8-10mm of grid false ceiling of Gyprock tiles with an extra insulation layer of 25 mm polystyrene on top of it. 10 number of 5 watt LED ceiling Lights in each unit for proper illumination | | |
| h. | All joints should be sealed by Silicon sealant | | |
| i. | Windows cover with locking arrangement. | | |
| | Residential huts/cabins | | |
| a . | Bunk Bed (2 layer) for occupancy of 4 people Size 6' X 3' in each residential units (detailed specifications at table 1.) | | |
| b. | Two working table (folding table attached with wall) of Size 3' X 2.5' made of standard teak wood | | |

| | | | | |
|------------------------------------|----------------------------------------------------------------------------------------------------------------------------------------------------------------------------------------------------------------|--|--|--|
| c. | A fixed standing wardrobe made of teak wood/ marine ply with dimension of 6'x4'x1.5' in each residential unit. For details see figure 4, covered drawers should be provided, with necessary holders and locks. | | | |
| d. | Electric Fitments: LED Lights and five 5 Amp. Socket in each residential unit. | | | |
| Table 1. Bed specifications | | | | |
| Bunk Bed Quantity | 4 | | | |
| Dimension | 6'Lx3'Wx6'H | | | |
| Wood Specification | Bed frames should be made of highest grade of teak wood | | | |
| Size | 6'Lx3W | | | |
| Leg | 2x6 legs | | | |
| Rung | 2X4 rungs | | | |
| Safety Rails | 8" thick safety rails in upper bed and go 10" and 15" above the top of the mattress | | | |
| Bed Slats | Two bed slats | | | |
| Capacity | 500kg | | | |
| Ladder | Angled end ladder | | | |
| Storage | Lower bed of each unit should have storage | | | |

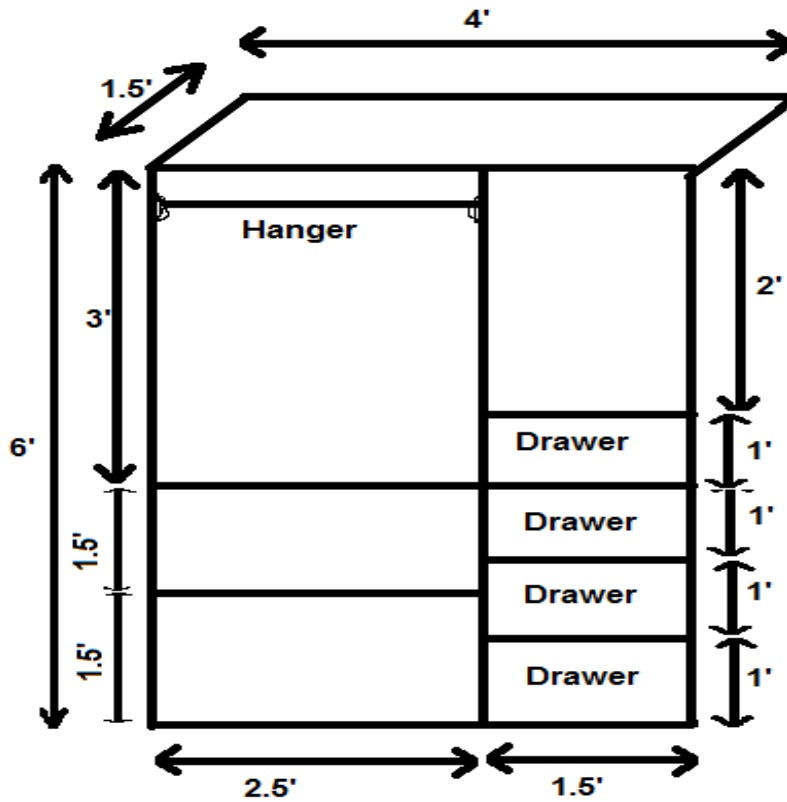


Figure 4. Wardrobe

| | | | |
|----|-----------------------------------------------------------------------------------------------------------------------------------------------------------------------------------------------------------------------------|--|--|
| | Kitchen: | | |
| a. | Platform: L shape (fire proof material) with dimension of 6'x2' in one side and 3'x2'in adjacent side. Height should be 3'. At least three racks all along with covered in each side should be provided under the platform. | | |
| b. | One SS Sink size 2'x1.5' with complete connections with tap | | |
| c. | Electric Fitments: LED lights and 2, five Amp. Socket | | |
| d. | Exhaust fan facility with shutter covers should be provided for the kitchen | | |
| | Washroom | | |
| a. | Western Toilet (standard size) -1 with all fittings | | |
| b. | Wash basin size of 1.5'x 1' – 1 with all fittings | | |
| c. | Tap -3 with all fittings (one for toilet, one for basin and one for bath) | | |
| d. | Mirror with fittings: 2.5'x2' - 2 | | |
| e. | Electric Fitments: LED lights and 2, five Amp. Socket | | |
| | Laboratory huts/cabins | | |
| a. | Central table for laboratory (9'x4' one table or 4.5'x 4' two tables) made of standard teak wood. Height of table should be adjustable between 2.5'-3.5'. | | |
| b. | Instrumentation platform all along three sides (10'x2' one side, 15'x2'second side and 10'x2'third side with height of 3' as shown in figure 2). | | |
| c. | At least three racks (drawers) with four partitions all along in each side including covered drawer should be provided under the platform, with necessary holders and locks. | | |
| d. | Two SS wash basins (SS Sink size 2'x1.5')with complete tap connections | | |
| e. | Electric Fitments: LED Lights and 5, five Amps. Socket | | |
| f. | Exhaust fan facility with shutter covers | | |
| | Wash room and Toilets | | |
| a. | One Indian type and one Western type Toilets with all fittings (one in each toilet) | | |
| b. | Wash basin size of 1.5'x 1' – 2 with all fittings(one in each toilet) | | |
| c. | Tap -2 with all fittings (one in each toilet) | | |
| d. | Mirror: 2.5'x2' - 2 | | |
| e. | Electric Fitments: LED lights and 2, five Amp. Socket | | |
| f. | Exhaust fan facility with shutter covers should be provided. | | |
| | Note: Separate water tank with all fittings for each unit should have provided. | | |
| | All electrical wire/fittings, bathroom/toilet fittings, false ceiling, glass and water tanks should be of reputed international brands/make. | | |

TERMS AND CONDITIONS FOR SUBMISSION OF QUOTATION

1) The National Centre for Antarctic and Ocean Research (NCAOR) invites sealed quotations in two-parts from the reputed firms for the “DESIGN, SUPPLY & INSTALLATION OF A FIELD STATION” as per the specifications given in Annexure I.

2) The technical and financial Bids should be submitted in two separate sealed covers, super scribing “Part-I Technical Bid for “DESIGN, SUPPLY & INSTALLATION OF A FIELD STATION” Tender No., due date and “Part-II Financial Bid for “DESIGN, SUPPLY & INSTALLATION OF A FIELD STATION” Tender No., due date. Both the bids should be kept in a single cover by super scribing tender for “DESIGN, SUPPLY & INSTALLATION OF A FIELD STATION” sealed and addressed to the Director, National Centre for Antarctic and Ocean Research, Headland-Sada, Vasco-da-Gama, Goa-403 804. Offer sent through fax will not be accepted.

3) Overwriting and corrections should be attested properly. The bid should be complete in all respects and should be duly signed. Incomplete and unsigned bids will not be considered at all.

4) All relevant technical literature pertain to items quoted **with full specifications (Drawing, if any), information about the products quoted, including brochures if any should accompany the quotation.**

5) A list of **reputed clients to whom the firm has supplied similar items to be furnished along-with the quotation.**

In the TECHNICAL BID, the Bidder should furnish the Name and address of the Purchasers placed orders on similar Field Station with order No, date, Description and quantity, Date of Supply along with Contact person Telephone No, Fax No, and e mail address of Purchaser.

The Bidder should enclose copies of Purchase Orders only in the FINANCIAL BID.

6) If the bidder is registered under SSI, NSIC claiming any exemptions should submit valid certificates along with the quotes, failing which quotation will not be considered.

7) Quotation should be **valid for a period of 120 days from the date of tender opening and the period of delivery required should also be clearly indicated.**

8) The **warranty period** and the kind of **post-warranty support** should be indicated. Warranty shall commence from the date of installation and acceptance of the complete Field Station supplied under the Purchase Order / Contract.

9) **Technical bid should contain EMD.**

Bidders shall submit **EMD** along with their tender, **either By DD** drawn in favor of NCAOR, on any nationalized bank for a sum of ` 1,00,000/- (Rupees One Lakh only) payable at Vasco-da-Gama only **or in the form of a bank guarantee** for a sum of ` 1,00,000/- (Rupees One Lakh only) from any reputed bank (scheduled bank) initially valid for 180 days from the date of closing of the tender as per the proforma enclosed. This bank Guarantee in original shall be submitted along with the technical bid only.

Tender without EMD in the envelope containing technical bid shall be summarily rejected. The EMD of unsuccessful bidders shall be returned within 30 days of the award of contract.

The earnest money will be liable to be forfeited, if the tenderer withdraws or amends, impairs or derogates from the tender if any respect within the period of validity of his tender.

10) Please **specify the Make/Brand** and Name of the Manufacturer with address, country of origin and currency in which rates are quoted.

11) The Purchaser requires that the bidders suppliers and contractors observe the highest standard of ethics during the procurement and execution of such contracts. In pursuit of this policy, the following are defined:

“Corrupt practice” means the offering, giving, receiving, or soliciting, directly or indirectly, of anything of value to influence the action of a public official in the procurement process or in contract execution:

“fraudulent practice” means a misrepresentation or omission of facts in order to influence a procurement process or the execution of contract;

“collusive practice” means a scheme or arrangement between two or more bidders, with or without the knowledge of purchaser, designed to establish bid prices at artificial, noncompetitive levels; and

“coercive practice: means harming or threatening to harm, directly or indirectly, persons or their property to influence their participation in the procurement process or affect the execution of contract;

The purchaser will reject a proposal for award if it determines that the Bidder recommended for award has, directly or through an agent, engaged in corrupt, fraudulent, collusive or coercive practices in competing for the contract in question; The Decision of Director, NCAOR shall be final and binding.

12) Bidders that doesn't manufacture the goods it offers to supply shall submit Manufacturer's Authorization form on the letterhead of the Manufacturer duly signed and stamped by a person with the proper authority to sign documents that are binding on the Manufacturer as per the following format should be submitted failing which the quotation will not be considered.

To
The Director
NCAOR
GOA

Sub: Manufacturers' Authorization form against Tender No: _____

We _____(Name of the Manufacturer) who are official manufacturers of _____(Type of goods manufactured) having factories at _____(full address of Manufacturer's factories) do hereby authorize _____(Name of the Bidder) to submit a bid against your Tender No. _____for the _____Goods manufactured by us and to subsequently negotiate and sign the contract.

We hereby extend our full guarantee and warranty with respect to the Goods offered by the above firm

Manufacturer's Name:
Signature of Authorized
representative of the Manufacturer:

Duly authorized to sign this Authorization on behalf of : _____(Name of the Bidder)

Date:

In case the bidder not doing business within India, shall furnish the certificate to the effect that the bidder is or will be represented by an agent in India equipped and able to carry out the supply, maintenance, repair obligations etc., during the warranty and post warranty period or ensure a mechanism at place for carrying out the supply, maintenance, repair obligations etc., during the warranty and post- warranty period.

13) **Compliance Statement:** Field Stations point-by-point comparison/compliance statement with **technical specification** indicated in the tender, should be enclosed along with your tender as well as any other extra features of the Field Station be shown separately therein and also **compliance statement for all commercial terms** of the tender document.

14) NCAOR is not entitled to issue form “**C/D**”. No Sales Tax or any other Tax shall be payable by us unless payment of the same is specifically mentioned by the suppliers in their bids and same is legally leviable.

15) To avail duty concessions i.e. **Excise Duty** as per Govt. notification 10/97 & **Custom Duty** as per Govt. notification 51/96, NCAOR will provide exemption certificates. Hence, the rates should be split into basic cost and Excise Duty if any.

16) **Technical Bid should contain** all details and specifications of the Field Station offered, delivery schedule, warranty, payment term, installation, training, post-warranty, user-list, service support **WITHOUT PRICE** and **Financial bid should contain** details of the price(s) of the item(s) quoted in the technical bid. The Technical bid should not contain any references to the pricing.

In case the technical bid contains any direct or indirect reference to quoted price the bid is liable to be rejected.

The Prices shall be quoted in Indian Rupees for offers received for supply within India.

Tender should contain item-wise prices including total ex-works price, Excise Duty, VAT/Taxes, Charges for Inland Transportation, Insurance and other local services required for the delivering the goods.

17) A Committee constituted by the Director, NCAOR for the purpose reserves the right to open the bids. Only technical bids will be opened on the date and time mentioned in the tender document. The financial bids of those tenderers whose technical bids are found to be meeting our specifications only will be opened in their presence at date and time to be notified later.

18) The firm to the full satisfaction of the NCAOR should carry out the **installation and commissioning** and the time-frame for the whole process should be specified in the technical bid.

19) A technical Committee constituted by the Director will assess the product supplied/installed for their quality and their conformity to the specifications provided by the firm in their quotations. Any item(s) identified by the Committee to be not as per the specifications or are found to be of inferior quality will be rejected, and the bills towards the supply will not be processed for payment till proper replacements are provided.

20) Payment shall be made in milestone after supply and acceptance of the Field Station by NCAOR. 60% payment of the order value will be released immediately after supply of the material at site, on certification by the indenting officer/project leader after submission of a Bank Guarantee for 10% value of the order towards warranty guarantee. The remaining payment will be released after installation of entire facility. The **performance Bank Guarantee** should be furnished within 15 days from the date of placement of order from a reputed bank (scheduled bank in India **or** foreign bank operating in India) valid till 60 days after the warranty period.

21) Suppliers should clearly define the mechanisms of **post-warranty** maintenance or support. Supplier should undertake to support the product for a minimum period of 5 years (post-warranty). Post Warranty, AMC charges for a period of 3 years (annual bases) should also be quoted separately in the financial bid.

22) **The submission of tender** shall be deemed to be an admission on the part of the tenderer, had fully acquainted with the specifications, drawings etc. and no claim other than what stated in the tender shall be paid in the event of award of Purchase Order.

23) Expenditure involved towards any extra materials required for labour involved for successful installation of the Field Station, if not quoted for, would have to be borne by the tenderer.

24) **Acceptance of this tender** form and submission of the quote within the stipulated time would be treated as:

- a) The tenderer has understood all requirements as described in our Tender document.
- b) Acceptance to provide/establish all the facilities mentioned in our tender without any price escalation, if the tenderer finds it necessary to add any hardware or software or any other materials during implementation.
- c) Agreeing to execute order to the satisfaction of NCAOR or its authorized representatives within the stipulated time.

25) **Installation charges** should be clearly indicated.

26) Tender should clearly define the **infrastructure facilities required** for installation of the Field Station.

27) NCAOR will not be liable for any obligation until such time NCAOR has communicated to the successful bidder of its decision to release the Purchase Order.

28) **NCAOR will not be responsible for any postal delays.**

29) Bidders shall note that NCAOR will not entertain any correspondence or queries on the status of the offers received against this Tender Invitation.

30) Tenders from Manufacturers/Suppliers/Tenderers whose performance was not satisfactory in respect of quality of supplies and delivery schedules in any organizations, are liable for rejection. The tenders that do not comply with the above criteria and other terms & conditions are liable for rejection.

31) The Director, NCAOR does not bind to accept the lowest quotation and reserves the right to himself, to reject or partly accept any or all the quotations received without assigning any reason.

32) All disputes arising in connection with executing the purchase order will be subject to the Jurisdiction of the Courts in Goa only.

COMMERCIAL COMPLIANCE STATEMENT FOR DESIGN, SUPPLY & INSTALLATION OF A FIELD STATION.

| Sr. No. | COMMERCIAL SPECIFICATION FOR DESIGN, SUPPLY & INSTALLATION OF A FIELD STATION | COMPLIED/ NOT COMPLIED | EXTRA FEATURES |
|---------|--------------------------------------------------------------------------------------------------------------------------------------------------------------------------------------------------------------------------------------------------------------------------------------------------------------------------------------------------------------------------------------------------------------------|------------------------|----------------|
| 1 | A list of reputed clients to whom the firm has supplied similar items to be furnished along-with the quotation. | | |
| 2 | In the TECHNICAL BID, the Bidder should furnish the Name and address of the Purchasers placed orders on similar Field Station with order No, date, Description and quantity, Date of Supply alongwith Contact person Telephone No, Fax No, and e mail address of Purchaser. | | |
| 3 | The Bidder should enclose copies of Purchase Orders only in the FINANCIAL BID. | | |
| 4 | SSI, NSIC Registration Certificate | | |
| 5 | Quotation should be valid for a period of 120 days from the date of tender opening and the period of delivery required should also be clearly indicated. | | |
| 6 | The warranty period and the kind of post-warranty support should be indicated. Warranty shall commence from the date of installation and acceptance of the complete Field Station supplied under the Purchase Order / Contract. | | |
| 7 | Bidders shall submit EMD along with their tender, either By DD drawn in favor of NCAOR, on any nationalized bank for a sum of ` 1,00,000/- (Rupees One Lakh only) payable at Vasco-da-Gama only or in the form of a bank guarantee for a sum of ` 1,00,000/-(Rupees One Lakh only) from any reputed bank (scheduled bank) | | |
| 8 | Compliance Statement: Field Stations point-by-point comparison/compliance statement with technical specification indicated in the tender, should be enclosed along with your tender as well as any other extra features of the Field Station be shown separately therein and also compliance statement for all commercial terms of the tender document. | | |
| 9 | NCAOR is not entitled to issue form "C/D". No Sales Tax or any other Tax shall be payable by us unless payment of the same is specifically mentioned by the suppliers in their bids and same is legally leviable. | | |
| 10 | To avail duty concessions i.e. Excise Duty as per Govt. notification 10/97 & Custom Duty as per Govt. notification 51/96, NCAOR will provide exemption certificates. Hence, the rates should be split into basic cost and Excise Duty if any. | | |
| 11 | Technical Bid should contain all details and specifications of the Field Station offered, delivery schedule, warranty, payment term, installation, training, post-warranty, user-list, service support WITHOUT PRICE and Financial bid should contain details of the price(s) of the item(s) quoted in the technical bid. The Technical bid should not contain any references to the pricing. | | |
| 12 | In case the technical bid contains any direct or indirect reference to quoted price the bid is liable to be rejected. | | |
| 13 | The Prices shall be quoted in Indian Rupees for offers received for supply within India. | | |
| 14 | Tender should contain item-wise prices including total ex-works price, Excise Duty, VAT/Taxes, Charges for Inland Transportation, Insurance and other local services required for the delivering the goods. | | |
| 15 | A Committee constituted by the Director, NCAOR for the purpose reserves the right to open the bids. Only technical bids will be opened | | |

| | | | |
|----|------------------------------------------------------------------------------------------------------------------------------------------------------------------------------------------------------------------------------------------------------------------------------------------------------------------------------------------------------------------------------------------------------------------------------------------------------------------------------------------------------------------------------------------------------------------------------------------------------------------------------|--|--|
| | on the date and time mentioned in the tender document. The financial bids of those tenderers whose technical bids are found to be meeting our specifications only will be opened in their presence at date and time to be notified later. | | |
| 16 | The firm to the full satisfaction of the NCAOR should carry out the installation and commissioning and the time-frame for the whole process should be specified in the technical bid. | | |
| 17 | A technical Committee constituted by the Director will assess the product supplied/installed for their quality and their conformity to the specifications provided by the firm in their quotations. Any item(s) identified by the Committee to be not as per the specifications or are found to be of inferior quality will be rejected, and the bills towards the supply will not be processed for payment till proper replacements are provided. | | |
| 18 | Payment shall be made in milestone after supply and acceptance of the Field Station by NCAOR. 60% payment of the order value will be released immediately after supply of the material at site, on certification by the indenting officer/project leader after submission of a Bank Guarantee for 10% value of the order towards warranty guarantee. The remaining payment will be released after installation of entire facility. | | |
| 19 | The performance Bank Guarantee should be furnished within 15 days from the date of placement of order from a reputed bank (scheduled bank in India or foreign bank operating in India) valid till 60 days after the warranty period. | | |
| 20 | Suppliers should clearly define the mechanisms of post-warranty maintenance or support. Supplier should undertake to support the product for a minimum period of 5 years (post-warranty). Post Warranty, AMC charges for a period of 3 years (annual bases) should also be quoted separately in the financial bid. | | |
| 21 | The submission of tender shall be deemed to be an admission on the part of the tenderer, had fully acquainted with the specifications, drawings etc. and no claim other than what stated in the tender shall be paid in the event of award of Purchase Order. | | |
| 22 | Expenditure involved towards any extra materials required for labour involved for successful installation of the Field Station, if not quoted for, would have to be borne by the tenderer. | | |
| 23 | Acceptance of this tender form and submission of the quote within the stipulated time would be treated as: <ul style="list-style-type: none"> • The tenderer has understood all requirements as described in our Tender document. • Acceptance to provide/establish all the facilities mentioned in our tender without any price escalation, if the tenderer finds it necessary to add any hardware or software or any other materials during implementation. • Agreeing to execute order to the satisfaction of NCAOR or its authorized representatives within the stipulated time. | | |
| 24 | Tender should clearly define the infrastructure facilities required for installation of the Field Station. | | |

QUESTIONNAIRE

- a. **Name of the Manufacturer / Tenderer**
- b. **Full postal address with Telephone, Telefax, Email**
- c. **Please specify whether Public Limited, Company, Private Organization or Partnership Firm**
- d. **Nature of the Business**
- e. **Date of Establishment**
- f. **Present Turnover**
- g. **Permanent Income Tax Ref. No.**
- h. **C.S.T. / S.T. NO.**
- i. **Address & Telephone Nos. Of your branch office in GOA (please specify whether Distributing/Servicing/Marketing the products)**
- j. **Technical Compliance statement.**
- k. **Commercial Compliance statement.**
- l. **Reference of reputed Customers**
- m. **Details of the highest order executed and value thereof**
- n. **Authorization from Manufacturer/Supplier attached**
- o. **Tender fee submitted/enclosed.**
- p. **E.M.D. attached with TECHNICAL BID.**
- q. **SSI, NSIC Registration Certificate.**
- r. **Infrastructure facilities required for installation & commissioning attached**
- s. **Technical Specifications/Literature/Brochure attached**
- t. **Tender Acceptance**

TENDER ACCEPTANCE UNDERTAKING

To

The Director,
NCAOR, Headland Sada
Vasco - Goa

Having examined the tender document for “**DESIGN, SUPPLY & INSTALLATION OF A FIELD STATION**”, we the undersigned, hereby offer to supply the Field Station in conformity with all specifications and conditions set out in the tender document.

We enclosed all the relevant documents as per the tender.

We understand that you are not bound to accept the lowest or any tender received.

Date :

(Signature of Bidder)

Name :

Designation :

Seal

BANK GUARANTEE FORMAT FOR FURNISHING EMD

To

**NATIONAL CENTRE FOR ANTARCTIC & OCEAN RESEARCH
Headland Sada, Vasco-da-Gama, GOA 403 804, INDIA**

Whereas _____
(Hereinafter called the "tenderer")
has submitted their offer dated _____
for the supply of _____
(Herein after called the "tender")

WE _____ of having our registered office
At _____ are bound unto the NATIONAL
(Hereinafter called the Bank)

CENTRE FOR ANTARCTIC & OCEAN RESEARCH, Ministry of Earth Sciences, Govt. Of India having its office at Headland Sada, Vasco Goa 403 804, India (herein after called NCAOR which expression shall unless repugnant to the context or meaning thereof include all its successors, administrators, executors and assigns) in the sum of _____ for which payment will and truly to be made to. NCAOR, the Bank binds itself, its successors and assigns by these presents. Sealed with the common seal of the said Bank this _____ day of _____ 2015.

THE CONDITIONS OF THIS OBLIGATION ARE:

1) If the tenderer withdraws or amends, impairs or derogates from the tender in any respect within the period of validity of this tender.

2) If the tenderer having been notified of the acceptance of his tender by NCAOR during the period of its validity.

2.a) If the tenderer fails to furnish the Performance security for the due performance of the contract.

2.b) Fails or refuses to execute the contract

We undertake to pay NCAOR up to the above amount upon receipt of its first written demand, without NCAOR having to substantiate its demand, provided that in its demand the NCAOR will note that the amount claimed by it is due to it owing to the occurrence of one or both the two conditions, specifying the occurred condition or conditions.

This guarantee is valid until the _____ day of _____ 2015.

Signature of the bank

NATIONAL CENTRE FOR ANTARCTIC & OCEAN RESEARCH
(Ministry of Earth Sciences, Govt. Of India)

Headland Sada, Vasco-da-Gama GOA 403 804, INDIA

Tel: 91- (0) 832 2525571 Telefax: 91- (0) 832 2525573

Email: wariu62@ncaor.gov.in Website: www.ncaor.gov.in

PUBLIC TENDER

Director, National Centre for Antarctic & Ocean Research (NCAOR) invites sealed tenders in two-parts (part I – Technical bid & part II Financial bid) super scribing Tender No. Item and due date from well established/ reputed manufacturers / authorized and bonafide vendors for supply of the following:-

| Sl. No. | Tender No. | Item Description | Qty. | Cost of Tender Doc. | EMD |
|---------|----------------------|--------------------------------------------------|------|---------------------|------------|
| 1 | NCAOR/LAB-2264/PT-55 | DESIGN, SUPPLY & INSTALLATION OF A FIELD STATION | 01 | 2000/- | 1,00,000/- |

Last date for issue of tender documents : 30.03.2015

Last date for submission of quotation : 31.03.2015

The details of tender documents are also available in our website <http://www.ncaor.gov.in> and Central Public Procurement Portal <http://eprocure.gov.in>. Interested suppliers may download the details and submit the quotation on or before the due date along with tender fee.

The quotation without tender fee will not be considered.

Tender forms can be obtained from the Procurement section of NCAOR on all working days either by post or in person between 1000 – 1600 hours on payment of tender fees in the form of crossed Demand Draft payable at Vasco-da-gama only, from a Nationalized bank drawn in favor of NCAOR along with separate requisition indicating tender number and item. Tender forms can be obtained by speed post by remitting ` 50/- by Indian bidders in addition to the cost of tender documents.

The Director, NCAOR is not responsible for any transitional/postal delays.

The quotations will be opened on **01.04.2015** in the presence of tenderers or their authorized representatives.

The Director, NCAOR reserves the right to accept or reject any quotation in full or part thereof without assigning any reason.

Sd/-

For & on behalf of NCAOR